

Mitchell Albus Gallery, 132 Norfolk St, 2nd fl, New York 10002

Morgan O'Hara
Conceptual Drawings



Portrait of Susan Hewitt, Naturalist, New York 1984
graphite on Fabriano Michelangelo Roma paper, 19 x 26 inches / 47 x 65 centimeters
\$6,000



LIVE TRANSMISSION: movement of the hands of conductor Pierre Boulez while conducting the London Symphony Orchestra in Petrouchka at Carnegie Hall on his 70th birthday concert in 2000
graphite on Bristol paper, 14 x 17 / 35 x 49 cm
\$4000



LIVE TRANSMISSION: movement of the hands of Barack Obama during his last press conference at the White House 2016
graphite on Bristol paper, 14 x 17 inches / 35 x 43 centimeters
\$4000



LIVE TRANSMISSION: serving of food in a Meiji era home restaurant in Kitakyushu, Japan
graphite on rice paper, 25 X 30 inches / 672 X 76 centimeters
\$7,000



LIVE TRANSMISSION: serving of food in a Meiji era home restaurant in Kitakyushu, Japan
graphite on rice paper, 25 X 30 inches / 672 X 76 centimeters
\$7,000



Time Study Under Covid, 2019 - 2020, graphite on paper, 12 x 175.5 inches with etching
by Heinrich Seufferfeld made in the 1860s depicting the Hohentübingen Schloss



LIVE TRANSMISSION: movement of the hands of Martha Argerish rehearsing Beethoven on piano / Festival Pianistico Internazionale / Brescia, Italia 2001
graphite on Bristop paper, 27 1/2 x 39 inches / 70 x 100 centimeters
\$8,000



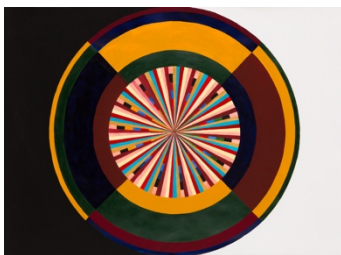
LIVE TRANSMISSION: movement of the hands of Spalding Gray while performing his monologue *Swimming to Cambodia*, Wooster Group 2001
graphite on Bristol paper, 14 x 16 ¾ inches
\$4,000



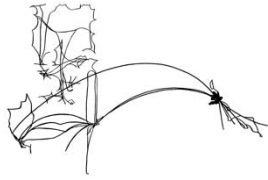
LIVE TRANSMISSION: movement of Cecil Taylor performing on piano at the Knitting Factory, New York 1996
graphite on Bristol paper, 22 x 28 inches / 56 x 71 centimeters
\$6,000



TIME STUDY: MANDALA words 2017
graphite on paper, 31 x 42 inches / 80 x 107 centimeters
\$7,000



TIME STUDY: MANDALA colors 2017
Gouache, watercolor and acrylic paint on paper, 31 x 42 inches / 80 x 107 centimeters
\$7,000



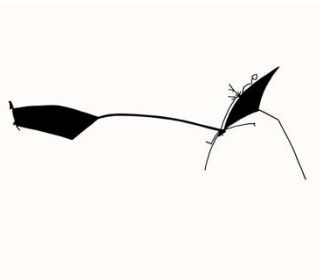
Portrait of Susan Hewitt, Naturalist, New York 1984
graphite on Fabriano Michelangelo Roma paper, 19 x 26 inches / 47 x 65 centimeters
\$6,000




World of Brian Ferneyhough composer
sumie-e ink on watercolor paper 200 grams, 30 x 22 inches / 76 x 56 centimeters
\$7,000



Portrait of Maria Giovanna Vella 1982
India ink on Fabriano Michelangelo Roma paper, 19 x 26 inches / 47 x 65 centimeters
\$6,000



World of Fauzi Senhaji, food engineer 1983
India ink on Fabriano Michelangelo Roma paper, 19 x 26 inches / 47 x 65 centimeters
\$6,000



Portrait of Emmanuel Kant 1981
graphite on Fabriano Michelangelo Roma paper, 19 x 26 inches / 47 x 65 centimeters
\$6,000

Additional drawings available in office