

Condo New York  
*hosting*  
Mary Mary, Glasgow

June 29–July 27, 2018

Rose Marcus, Sara Barker, Hans Breder

Entrance

Hans Breder, *Body/Sculptue*, 1969,  
geletin silver print  
7 1/2 x 7 1/2 ins



Gallery

Sara Barker  
*Saturnine night*, 2018  
Steel rod, aluminium sheet, automotive paint, perspex  
72 x 74 x 22 cms / 28 3/8 x 29 1/8 x 8 5/8 ins



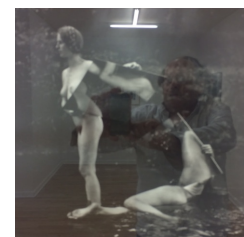
Sara Barker  
*Wild nature*, 2018  
Steel rod, aluminium sheet, automotive paint, perspex  
77 x 107.5 x 23 cms / 30 3/8 x 42 3/8 x 9 ins



Rose Marcus  
*Shadow*, 2018  
Glass, inkjet print without white ink, aluminium frame  
124.5 x 85.1 x 3.8 cms / 49 x 33.5 x 1.5 ins



Hans Breder,  
*Body/Sculptue*, 1971  
gelatin silver print  
15 x 15 ins



Rose Marcus

*Sun*, 2018

Inkjet print on adhesive vinyl, PVC, plexiglass

127 x 101.6 x 3.8 cms / 50 x 40 x 1.5 ins

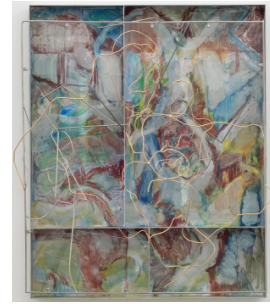


Sara Barker

*Giorgioni*, 2018

Steel rod, aluminium sheet, automotive paint, perspex

87 x 76 x 31 cms / 34 1/4 x 29 7/8 x 12 1/4 ins



Hans Breder,

*Body/Sculptue*, 1971

gelatin silver print

15 x 15 ins



Hans Breder

*Space - Time*, 1964

Digital print from Kodachrome transparency

30 x 45 ins



Rose Marcus

*Shade*, 2018

Inkjet print on adhesive vinyl, PVC, plexiglass, silk velvet, iron frame

155 x 124 x 5 cms / 61 x 48 7/8 x 2 ins



*Work in Office*

E'wao Kagoshima, *City Corner*, 2016, mixed media on paper, 14 x17 ins

E'wao Kagoshima, *Modest Eclipse*, 2016, mixed media on paper, 14 x17 ins

Dan Burkhart, *Day and Night*, 1979, oil on canvas, 75 x 70 ins

Dan Burkhart, *Young Poplar*, 1972, polyester resin, paint, walnut, 28 x 19.5 x 20 ins

Bill Bollinger, *Untitled (Centripetal Dispersion Drawing)*, ca. 1970, gouache and pencil on paper, 22 x 30 ins

Hans Bellmer, *Untitled (Dog)*, n.d., pencil on paper, 7 x 4 ins